

# ARCHITECTURE+DESIGN

A N I N D I A N J O U R N A L O F A R C H I T E C T U R E



MEENA  
MURTHY KAKKAR  
AND VISHAL  
KAKKAR

“We are striving  
for economic,  
social and  
environmental  
sustainability.”



**ARCHITECTURE  
FOR LEARNING**

ARUP CPKA CHROMED DESIGN STUDIO TEAM3 UN STUDIO VIJAY GUPTA ARCHITECTS



# A SPACE FOR HOLISTIC EDUCATION

**Project:** Amity International School, Mohali; **Architects:** Vijay Gupta Architects, New Delhi

**A comprehensive design scheme developed through cross-domain learning was instrumental in creating an atmosphere of all around development in this project**

Learning environments play a pivotal role in a child's life by creating a conducive atmosphere for overall growth and development. Spaces can create memories and enhance the learning experience greatly. The innovative approach to design for the Amity International School in Mohali, Punjab, attempts to go beyond the rigid morphology of educational spaces and planning. Drawing inferences from efficient models of tackling urban density, the complex seeks to embody a progressive spirit through an elevated level of spatial vibrancy by rethinking the design of conventional school complexes.

The site posed several challenges in terms of size, orientation and surroundings, which were ingeniously



To balance spatial requirements with site constraints, the building mass has been lifted to the podium level, spilling over into a large colonnaded platform connecting the cafeteria and doubling up as a play area. Similarly, by providing activity areas at each level of the five-storey structure, the school complex enables spaces for engagement and exploration at several junctures.

navigated, while developing a distinctive design scheme. To balance spatial requirements with site constraints, the building mass has been lifted to the podium level, spilling over into a large colonnaded platform connecting the cafeteria and doubling up as a play area. Similarly, by providing activity areas at each level of the five-storey structure, the school complex enables spaces for engagement and exploration at several junctures.

While formal environments can help focus better, informal areas are just as important and contribute significantly to the learning process. Based on this principle, the Amity International School encapsulates ample playgrounds, shaded walkways, play areas, and open and semi-open spaces across floors, forging engaging and exploratory spaces at several junctures.

A playful mix of punctures and louvers lightens the visual load of the imposing five-storey structure. These façade elements are planned to allow natural light in all spaces throughout the campus. One of the most prominent details of the project is the exuberant curtain wall that wraps around the built form on the southern side. Made out of laser-cut aluminium panels and strategically placed to protect the building from the harsh southern sun, this fluid envelope of blue and yellow asserts a distinct visual identity to the complex. The building follows an organic form, achieved through well-crafted concrete details, with

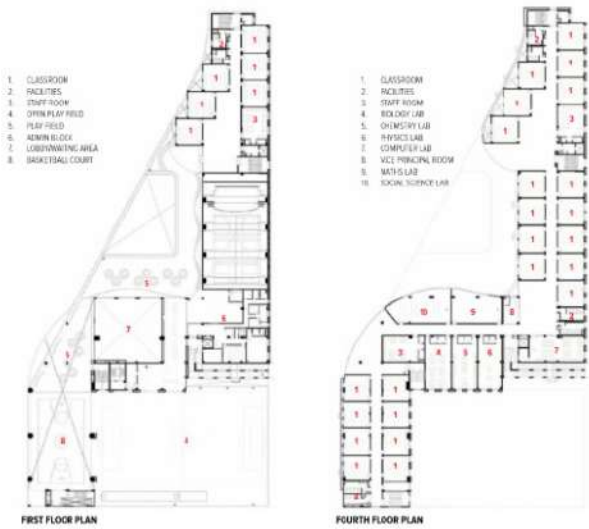


**AR. SAURABH GUPTA,**  
Partner, Vijay Gupta Architects

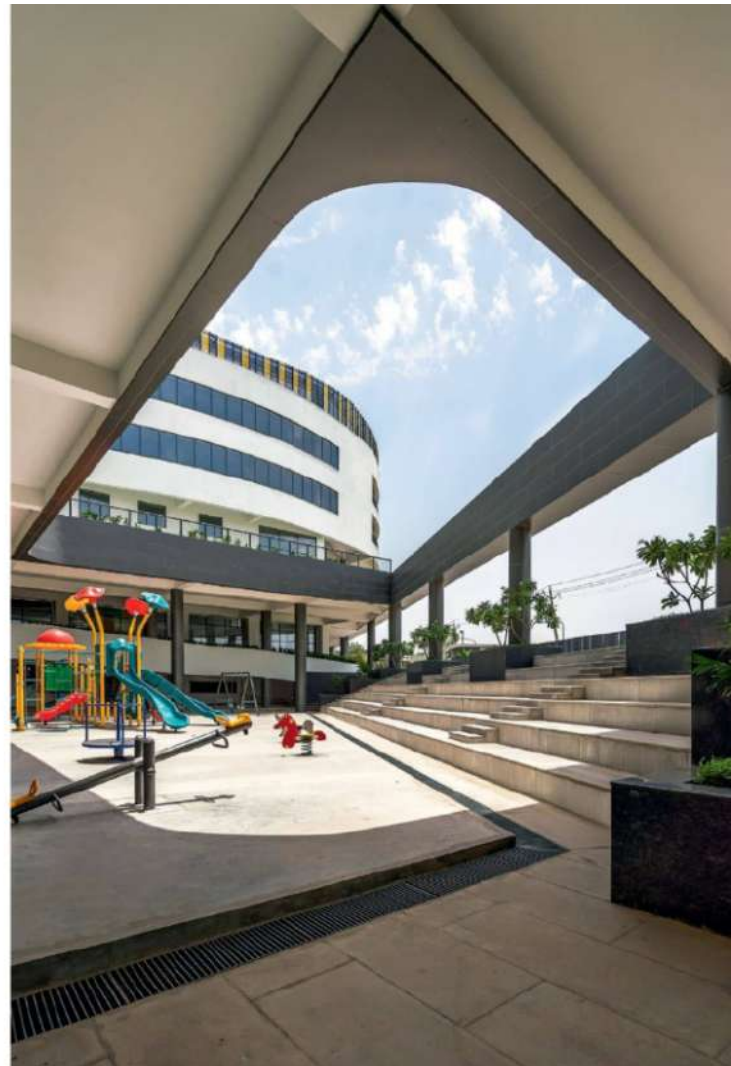
*Saurabh Gupta is a Partner at V&A and has been associated with the practice for over 15 years and carries forward Vijay Gupta's legacy as a thought leader in educational space design. He develops a design language for projects through an iterative process that complements his creative solutions for pragmatic spatial design challenges. Saurabh's design approach uses research in his multifaceted projects as a tool that plugs into the design process to evaluate and build upon ideas and practices.*

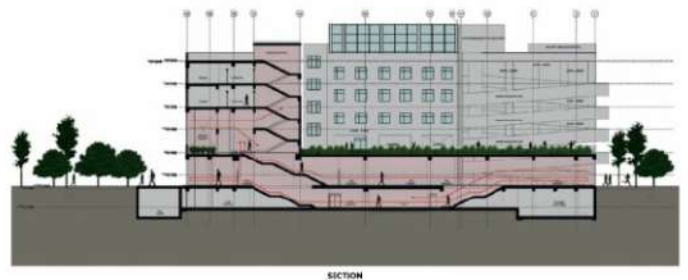






The interior spaces are shaped in a tactile language, with minimal but vibrant colours bringing in an elevated sense of dynamism, highlighting the innovative approach of harbouring a conducive environment for learning. Wooden porous partitions, organically designed, enable visual connectivity within spaces at all times.





Efficient planning through cross-domain learning was instrumental in developing a design scheme that is fit for holistic education. The comprehensive design scheme lays the blueprint for a holistic education—one where physical activity, social interaction, and creative exploration are just as crucial as curricular education.



a bare ceiling exposing the structural system and designed as an honest expression.

The interior spaces are shaped in a tactile language, with minimal but vibrant colours bringing in an elevated sense of dynamism, highlighting the innovative approach of harbouring a conducive environment for learning. Wooden porous partitions, organically designed, enable visual connectivity within spaces at all times. The North and South facades are a perfect example of functionality and aesthetics, as they allow the building to be climate-responsive while establishing a distinct visual identity. Efficient planning through cross-domain learning was instrumental in developing a design scheme that is fit for holistic education. The comprehensive design scheme lays the blueprint for a holistic education—one where physical activity, social interaction, and creative exploration are just as crucial as curricular education.

Photo credit: Aash Gaur

#### FACTFILE

**Client:** Bharat Robot Educator Foundation  
**Principal Architect:** Sourabh Gupta  
**Design Team:** Anandika Gupta  
**Structural Engineer:** Technical Project Consultants  
**Contractor:** Anup Builders Private Limited  
**Site Area:** 27 Acres  
**Built-up Area:** 1,00,000 sq. ft.  
**Project Cost:** 75 Crores  
**Completion Date:** December 2021





— Walk on —  
*luxury*

Exquisite floors from Greenpanel.

**Greenpanel Flooring** with HDF core and patented locking system called PERMACLICK™, makes the flooring resistant to any susceptibility from water ingress as well as accumulation of dirt.

Flooring Range

Prima Collection AC3 / AC4

Persona Collection AC4 / AC5



Perma Click  
Interlocking System



Scratch  
Resistant



100% HDF  
Base Core

**INDIA'S LARGEST** WOOD PANEL  
MANUFACTURER

Greenpanel Industries Limited: 3rd Floor, Plot No. 58, Sector 44, Gurugram 122003, Haryana.  
Regd. Office: Makum Road, Tinsukia 786125, Assam | C/N L20100AS2017PLC018272

TOLL-FREE NO 1800 102 2999

www.greenpanel.com   